

FIREWORK

National Music Day 2025

Words & Music by Katie Perry

♩ = 124

2 4 A 8

15 B C

8

26

30 D

34

38 E

42

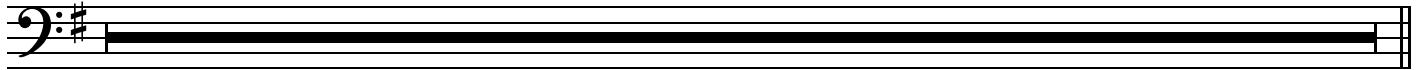
45



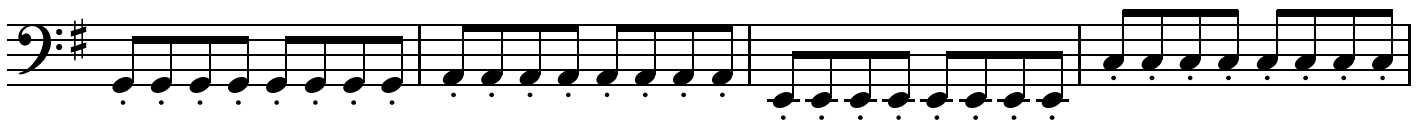
47

F

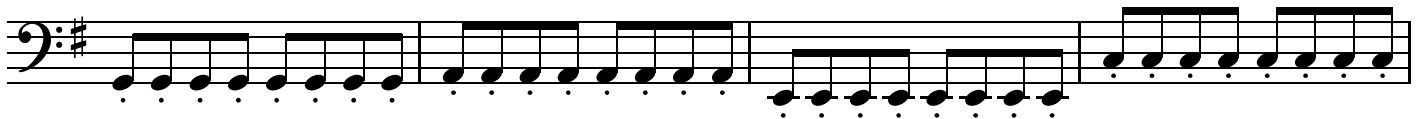
16



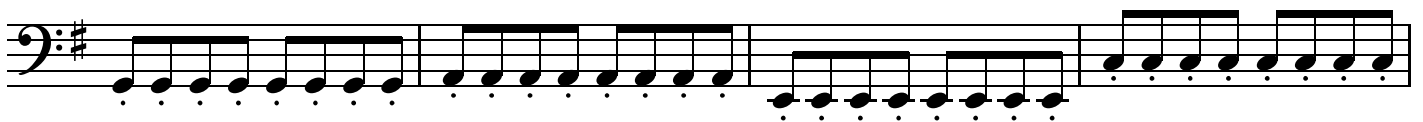
63

G

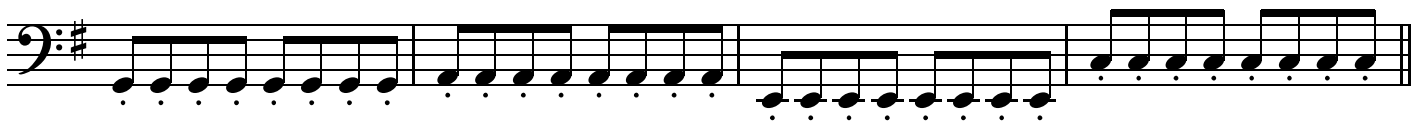
67



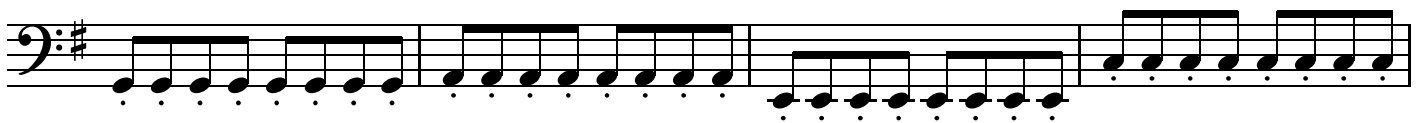
71

H

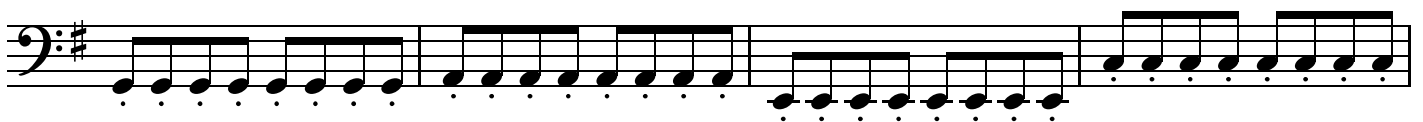
75



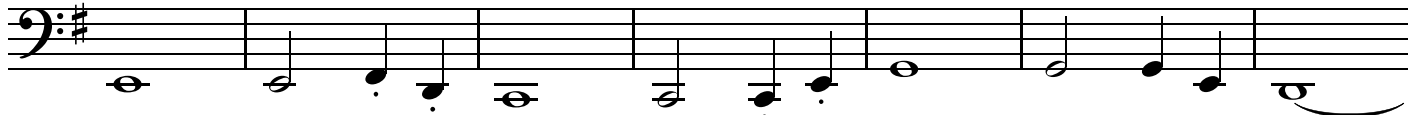
79

I


83




87 **J**

A single staff of music in bass clef with a key signature of one sharp (F#). The measure contains a sequence of notes: a whole note G2, a quarter note F#3, an eighth note G3, an eighth note A3, a quarter note G3, an eighth note F#3, an eighth note G3, and a whole note G2. A slur covers the final two notes.


94 **K**

A single staff of music in bass clef with a key signature of one sharp (F#). The measure starts with a whole rest, followed by a double bar line. The rest of the measure consists of a continuous eighth-note scale starting on G3 and ending on G4.


98

A single staff of music in bass clef with a key signature of one sharp (F#). The measure contains a continuous eighth-note scale starting on G3 and ending on G4.


102 **L**

A single staff of music in bass clef with a key signature of one sharp (F#). The measure contains a continuous eighth-note scale starting on G3 and ending on G4.

106

A single staff of music in bass clef with a key signature of one sharp (F#). The measure contains a continuous eighth-note scale starting on G3 and ending on G4.


110

A single staff of music in bass clef with a key signature of one sharp (F#). The measure contains a continuous eighth-note scale starting on G3 and ending on G4.

114

A single staff of music in bass clef with a key signature of one sharp (F#). The measure contains a continuous eighth-note scale starting on G3 and ending on G4.

117

A single staff of music in bass clef with a key signature of one sharp (F#). The measure contains a continuous eighth-note scale starting on G3 and ending on G4, followed by a whole note G4.