

# Composing to Pictures

***A 10-Week project of musical creativity throughout the Spring Term of 2025***

## About the Project

‘Composing to Pictures’ is all about encouraging students to create music inspired by artworks. Participating schools visit the New Art Gallery (NAG) in Walsall where they learn from an expert about selected Artworks picked specifically for the project. Following this, students then receive a musical workshop on creating music (aka ‘composing’) from one of the Walsall Music Education Service (WMES) music educators.

In the following weeks from visiting the NAG, students and staff must then create pieces of music inspired by the artworks studied. During the process, schools will receive two visits from the WMES music educator involved. The first visit is to oversee, mentor and help craft the student compositions. The second visit is to record or video the student compositions.

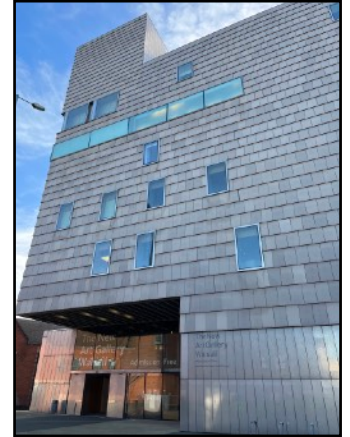
The project is then concluded with a video presentation on the WMES YouTube channel, which is shared with all the participating schools. To view the full timeline of the project, please see the next page for a more detailed outline. All ages and abilities can be catered for as the teaching content will be differentiated accordingly, and as a result the project is suitable for KS2,3,4 and 5.

Whilst the project is primarily known as ‘Composing to Pictures’, new for 2025, we’re adding a Rock’n’Pop songwriting element to the project, and calling it ‘Picks to Pics’. This maybe more suitable for secondary school music classes which feature more Rock’n’Pop young musicians.

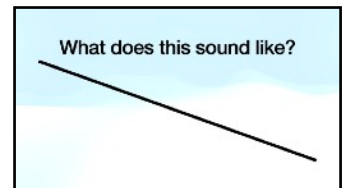
This project is heavily subsidised by the NAG and WMES. We kindly ask schools to pay a £50 contribution towards the project, which will then confirm the booking onto the project. Please also be aware, schools will need to arrange transport for the visit to the NAG.

## Key Project Aims

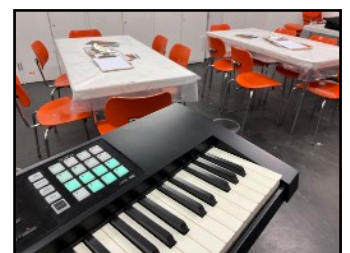
- Encourage students to be creative with music and compose
- Learn new musical terminology and processes to learn how to compose
- Visit the New Art Gallery in Walsall for a rich cultural and artistic experience
- Breakdown the traditional perception of a composer
- Continue to build and develop links between participating schools, the WMES & NAG
- Enjoy the process of creating new music
- Conclude the project with a final presentation which captures the new music created



*The New Art Gallery, Walsall*



*Visualising sounds in the Composer's Toolbox*



*Music Workshop at the NAG*



*'Hole in the Wall'  
One of the 2024 Artworks*

## Brief Overview & Timeline

### **Tuesday 7th January: Staff CPD 'Composer's Toolbox'**

*(Free of charge to attend for participating staff)*

Staff from participating schools are invited from 1-4pm to the Walsall Arena & Arts Centre for the 'Composer's Toolbox' CPD training. In this session, WMES Music Educator Nick Dewhurst explains the 10-week composition project, and shows staff how to compose, and which tools to use when helping the students with their own compositions. Resources will be given to staff to help students throughout the project.

### **Week 1: School visits to the New Art Gallery**

*Tuesday 21st/Wednesday 22nd/Friday 24th January*

On each of the given dates there is a 9.45am morning and 12.30pm afternoon visit available (with some flexibility for coach arrangements). The visit lasts two hours, and comprises of a 1 hour tour of the New Art Gallery focusing on the selected artworks for the project this year, followed by a one hour composition workshop, educating students on what composition is, and how to compose. Students will meet the New Art Gallery's Art Expert Rob Conway, plus the WMES's Music Educator Nick Dewhurst.

### **Weeks 2, 3, 4 - Creating Compositions in Schools**

Students start to create their compositions in school using the tools and processes they've learnt during the composition workshop at the NAG. Teaching staff will be able to support students using the resources they've been supplied with during the staff CPD session.

### **Weeks 5 & 6: WMES school visits to mentor student composition process**

*w/b 24/02/25 & 03/03/25*

WMES Music Educator Nick Dewhurst will arrange to visit the participating schools in these weeks, to see how the compositions are coming along. These sessions will last 1 hour, and will be a chance for Nick to see how the students are progressing, plus give feedback and help guide the students on the next steps of their compositions.

### **Weeks 7 & 8 - Refining Compositions in Schools**

Students continue to craft their compositions, but now having received extra support and guidance from the previous WMES visit, they should be able to refine the final details and get ready to record or present their compositions.

### **Weeks 9 & 10: WMES school visits to record student compositions**

*w/b 24/03/25 & 31/03/25*

WMES Music Educator Nick Dewhurst will arrange to visit the participating schools in these weeks to record the student compositions. Pieces can be presented either as video or audio, and will then be used in a final YouTube presentation of the project this year. Where filming is involved, please make sure all necessary video permissions are in place beforehand.

### **Tuesday 8th April: Final video presentation premieres on WMES YouTube channel**

A video will be published on the WMES YouTube channel, which showcases the compositions from the project this year. A link will be sent to schools for all students and staff involved with the process to enjoy seeing their work from the project.

## **How to participate in the 2025 project**

*Please complete the attached booking form, and return via email to [elizabeth.sale@walsall.gov.uk](mailto:elizabeth.sale@walsall.gov.uk)*

*If you have any questions, please contact Nick Dewhurst via email at [ndewhurst@walmused.org.uk](mailto:ndewhurst@walmused.org.uk)*



Supported using public funding by  
**ARTS COUNCIL  
ENGLAND**



**Walsall Council**

# Composing to Pictures 2025 Booking Form

Name.....

School.....

Job Title/Role.....

Contact Email Address.....

Contact Phone Number.....

Approximate number of children in group.....

Year Group.....

Would you prefer Composing to Pictures, or Picks to Pics?.....

**Please specify your preferred date and session**

The available dates are: **Tuesday 21st, Wednesday 22nd or Friday 24th January**

My preferred date is.....Morning or Afternoon?.....

**Please offer a 2nd date in the event your preferred choice is already taken**

My 2nd choice is.....Morning or Afternoon?.....

### Cost

This project is heavily subsidised by the New Art Gallery and Walsall Music Education Service. We kindly ask schools to pay a £50 contribution towards the project, which will then confirm the booking onto the project. Payment is possible either card, or via Purchase Order (PO). To pay via card, please contact Lizzie Sale via email at [elizabeth.sale@walsall.gov.uk](mailto:elizabeth.sale@walsall.gov.uk) or call 01922 652623. To pay via PO, please fill out your PO number below.

Purchase Order Number.....

### Travel Arrangements

Schools will need to arrange their own transport for the New Art Gallery Visit. Please make sure this is arranged well in advance of the day.

### Deadline for Entry

The deadline for entering the project this year is **Friday 25th October 2024**. Once all entries have been received and processed, we'll be able to notify you of the session you've been allocated. We should be able to send you this information very soon after the October half term, so you can make necessary travel arrangements for January's visit to the NAG.